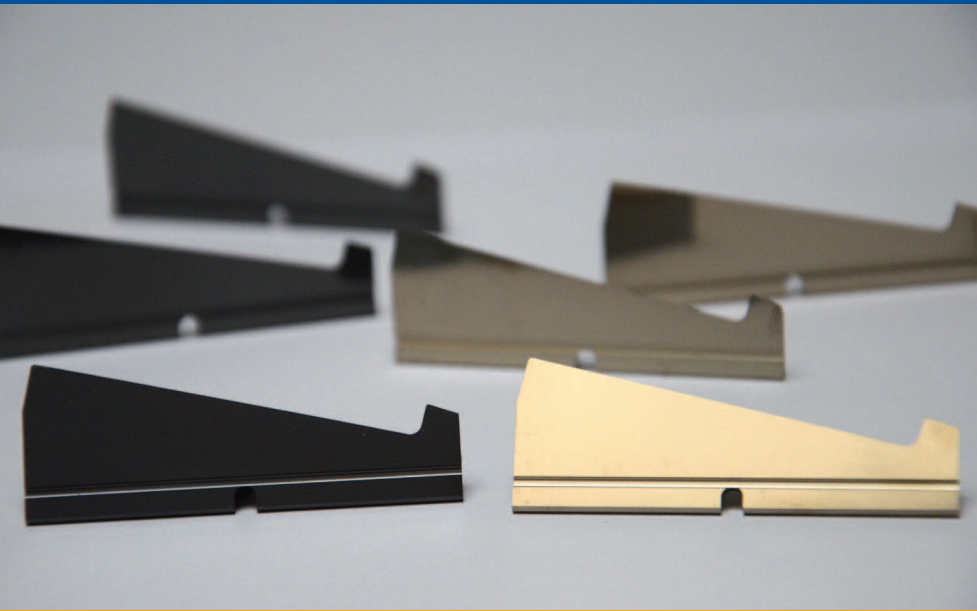


NEW
Marathon ProfilCut knives
more economic – more efficient



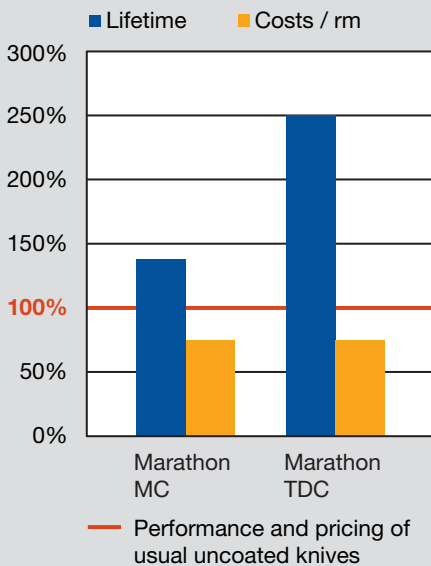
Marathon ProfilCut knives

The new benchmark in performance and cut quality

Advantages at a glance

- Significant increase in performance times from the Marathon coating
- Reduced machine downtime
- Protecting resources and saving costs

Marathon ProfilCut knives – The new benchmark in performance and cut quality



More Efficiency

ProfilCut knives Marathon MC and Marathon TDC for

- higher productivity,
- greater machine availability,
- reduced errors at knife change.

More quality

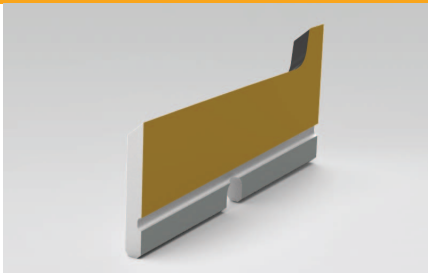
Higher performance times from the Marathon coating for

- greater constancy in finish quality,
- reduced running costs,
- reduced rework.

More efficient use of resources

A longer knife performance time means

- reduced replacement knife purchases,
- reduced use of tungsten carbide.



Marathon MC – excellent surface quality, especially in softwood



Marathon TDC – the expert for hardwood and abrasive materials

Growing demand worldwide for raw materials cause a steady upward spiral in costs for tools with tungsten carbide cutting edges. The solution is to optimise the raw material usage, reduce costs and increase the tools' performance.

The new Marathon high-performance coated ProfilCut knife increases performance times significantly with a more consistent, excellent cut quality as well as protecting valuable resources.

The knives are available in two versions: Marathon MC (Multi Coating) for demanding profiling tasks in small and medium sized companies. Marathon TDC (Tungsten Diamond Coating) when machining hardwood, abrasive materials and for large batch production to optimise setup and down-times.

With the ProfilCut-knife Marathon MC and Marathon TDC, Leitz improves efficiency and sets new standards in the processing of wood.

Leitz GmbH & Co. KG
Leitzstraße 2
73447 Oberkochen, Germany
Tel. +49 (0) 7364/950-0
Fax +49 (0) 7364/950-662
leitz@leitz.org
www.leitz.org

Leitz GmbH & Co. KG
Leitzstraße 80
4752 Riedau, Austria
Tel. +43 (0) 7764/8200-0
Fax +43 (0) 7764/8200-111
office.riedau@rie.leitz.org
www.leitz.org



We shape the future