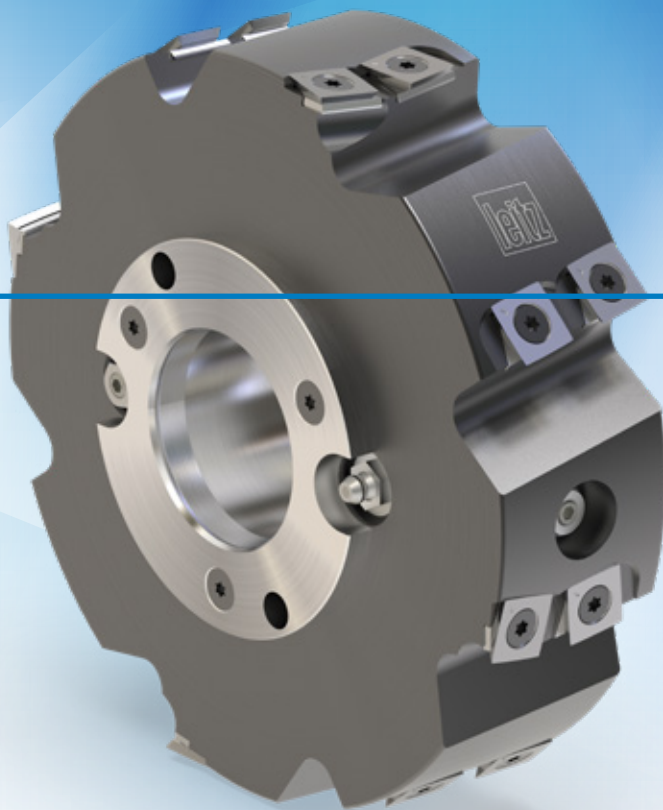


# HeliPlan jointing cutterhead with wear-resistant tool body

Optimum performance  
with abrasive materials

leitz



**When jointing abrasive materials, wear occurs not only on the cutting edges, but also on the tool body. Particularly in the gullet area, this can wear out so much that the body must be replaced prematurely for safety reasons. This causes unnecessary costs and reduces efficiency.**

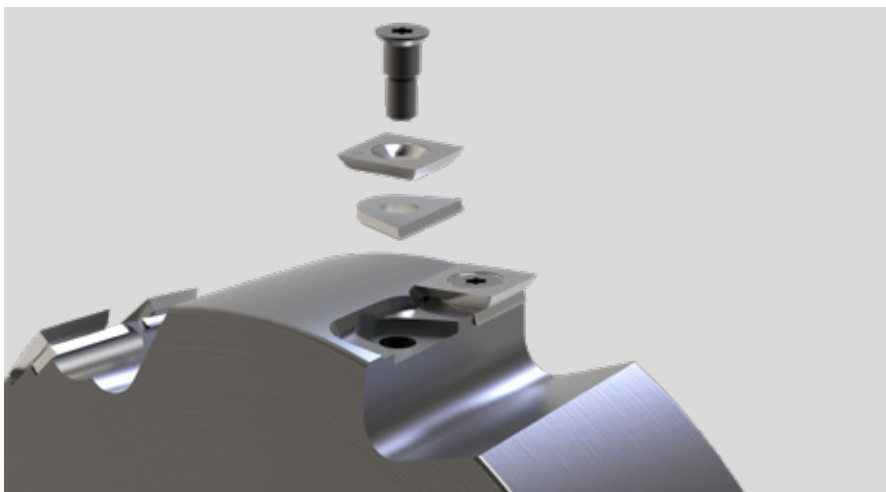
Using the new HeliPlan jointing cutterhead from Leitz, this problem is a thing of the past. Thanks to special carbide inserts, the gullet area is effectively protected against wear, which significantly extends the lifetime of the tool. At the same time, the tool impresses with the highest processing quality, less noise and energy-efficient use.

## YOUR BENEFITS

- Higher economic efficiency
- Long tool life
- Perfect planing results
- Significantly less noise

## AT A GLANCE

- With tungsten carbide inserts to protect the gullet area
- Suitable for large chip removal
- Optionally available with hydro clamping
- 4-fold usable knives
- Diameter 100-280 mm
- Suitable for all conventional planing and profiling machines
- Cutting material HW and TDC



Exploded view of the knife holder including wear protection plate

## 4-fold

■ TURNBLADES

## 5-fold

■ HIGHER PERFORMANCE  
■ TIME BY HW CUTTING  
■ MATERIAL COMPARED  
■ TO HS KNIVES

## -10 dB(A)

■ IN COMPARISON TO  
■ STRAIGHT THROUGH  
■ KNIVES

## Your benefits due to ...



### SUSTAINABILITY

#### Long tool life and less noise

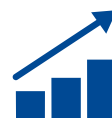
- No wear of the tool body due to carbide inserts in the gullet area
- Long tool life due to the use of HW turnblade knives
- Maximum resource utilisation thanks to reversible carbide knives with four cutting edges
- Less noise and lower power consumption of the machine thanks to adapted cutting arrangement



### QUALITY

#### Rough machining with fine finish quality

- Despite being designed for rough use, the tool can also be used for finish machining thanks to its rounded cutting edges, additional cutting angles and precise knife seats



### EFFICIENCY

#### Large chip removal and maximum user-friendliness

- Jointing with large chip removal due to special cutting edge geometry and gullet area design
- Easy handling and quick knife change thanks to standardised knife fixture without wedges

HeliPlan jointing  
cutterhead with  
wear-resistant tool  
body: maximum  
performance,  
minimum wear!

