

leitz

# Lignum™ Window System

Best prospects



Secured by Design



Official Police Security Initiative



The Joinery Network

# Content



Lignum Window System	3
Casement Windows	4
Flush Casement Window IV 57 (47/61/68)/93	
Stormproof Casement Window IV 57 (47/61/68)/78	
Box Sash Windows	7
Box Sash Spring Window IV 57 (47/61/68)/ 164 (144/172/186)	
Spring Balanced Window IV 57 (47/61/68)/ 164 (144/172/186)	
Doors	9
Single & Double Open Out Door IV 57 (61/68)/93	
Single & Double Open In Door IV 57 (61/68)/93	
Tooling System ProfilCut Q	13

# Lignum™ Window System



PAS 24:2016/2022  
Security



Secured by Design  
System



Document Q  
Compliant



Document L  
Compliant



Document M  
Compliant



BS6375-1 2009  
Weather Tightness



Double or Triple  
Glazing



Easy to  
Manufacture



Increased  
Productivity



Internally  
Beaded



Slim  
Sightlines



Energy  
Efficient

Lignum. The UK's first fully certified, independent timber window & door suite.

Leitz has worked closely with the Joinery Network to develop an exclusive tooling system for Lignum. The result is a high-quality timber window and door suite that is easier to manufacture and delivers increased productivity across a wide choice of machinery for spindles to CNC and window lines.

## Lignum Manufacturing Support

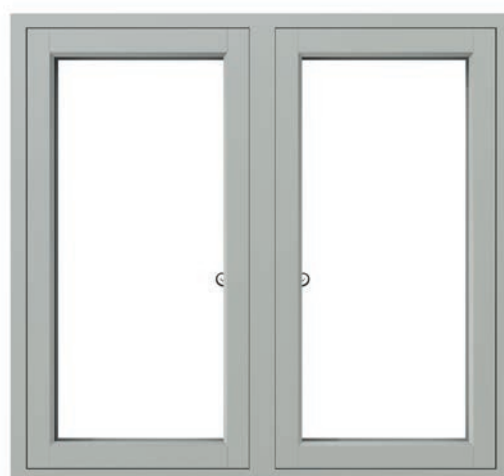
The Joinery Network along with Leitz Tooling created Lignum for joinery companies looking to grow their business making superior timber windows and doors. The set up for Lignum manufacturing includes consultancy and operative training, to help your team manufacture consistent superior products and optimise production efficiencies. Full technical drawings are available when signing up to the Lignum range.

## Lignum Marketing Support

The Lignum marketing support pack includes a great quality retail brochure, specification datasheets and product imagery to help you sell more windows and doors.



# Casement Windows



## BENEFITS

- Designed to suit both traditional and contemporary house styles.
- Clean, slim sightlines and internal Ovolo detailing makes the windows easy to clean. Ovolo glazing beads are standard with other options available on request.
- PAS 24 security certified as standard for new build applications. A narrow rail option is also available for refurbishment projects only.
- Internally beaded for easy installation. Glazing is done from the inside to reduce access costs and comply with health and safety regulations.
- Cills feature optional extensions and window board groove.
- Certification available when licenses are purchased from The Joinery Network.

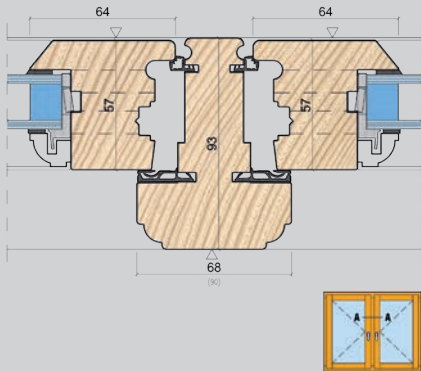
## AT A GLANCE

- Flush Casement Window
- Stormproof Casement Window

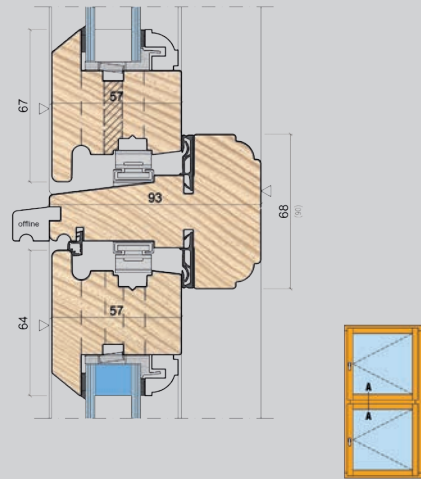
# Flush Casement Window IV 57 (47/61/68)/93

## Window sections

### Mullion



### Transome section

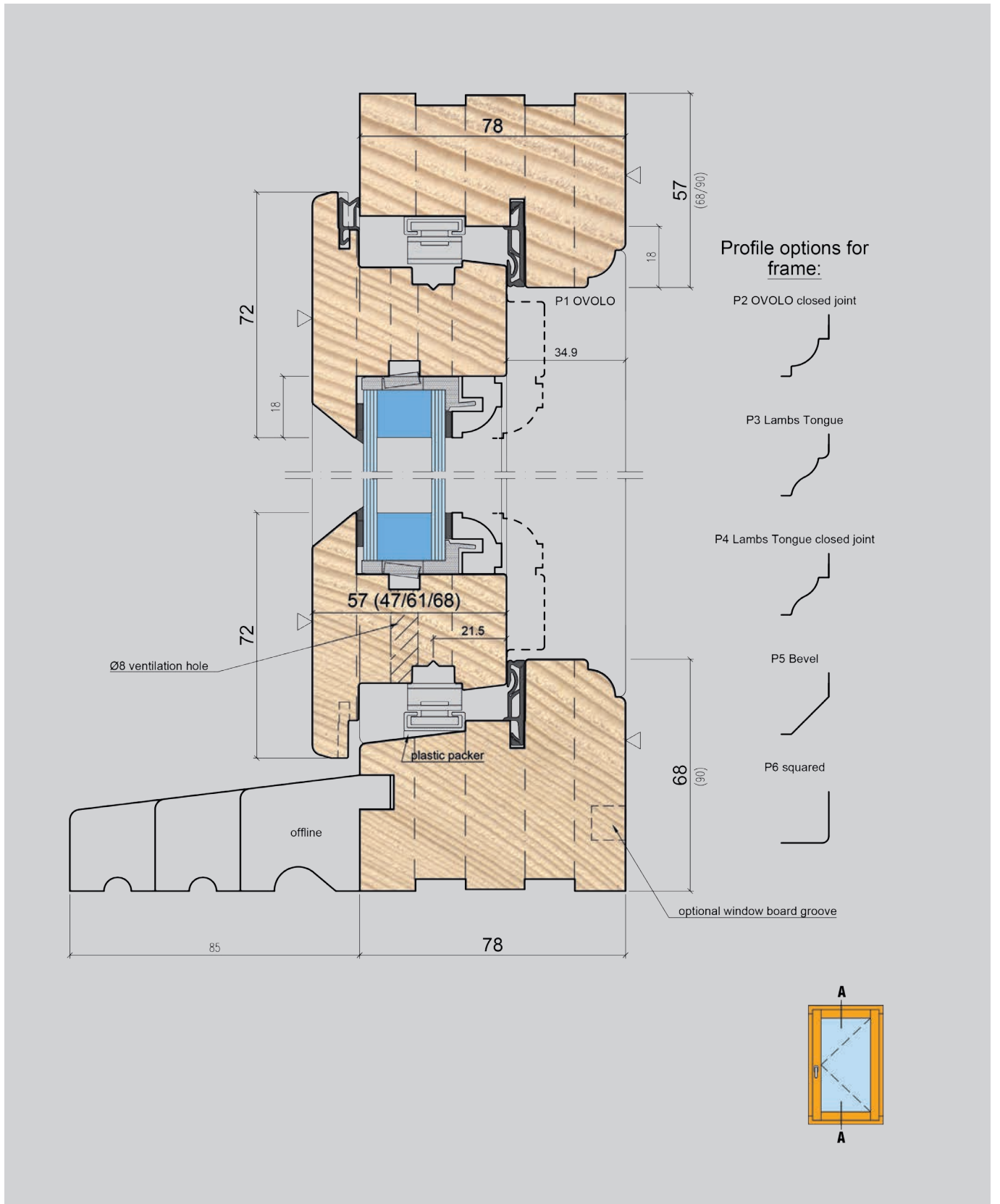


### Jamb details



# Stormproof Casement Window IV 57 (47/61/68)/78

## Window sections



# Box Sash Windows



## BENEFITS

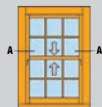
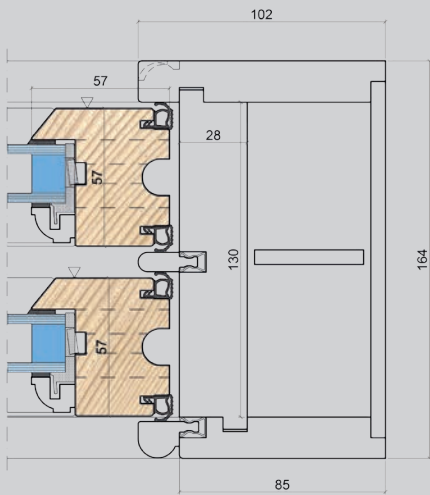
- Document Q compliant and designed for both new-build and also refurbishment projects.
- The external box liners are available in a choice of square, Ovolo or beaded profiles to suit traditional or contemporary property styles.
- Special PAS 24 security catches are available and glazing options accommodate glass units from 12 mm slim heritage up to 24.8 high security insulated glass units.
- Glazing bars are available in range of sizes including 18 mm and 22 mm.
- Cills feature optional extensions and window board groove.
- Certification available when licenses are purchased from The Joinery Network.

## AT A GLANCE

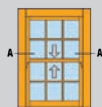
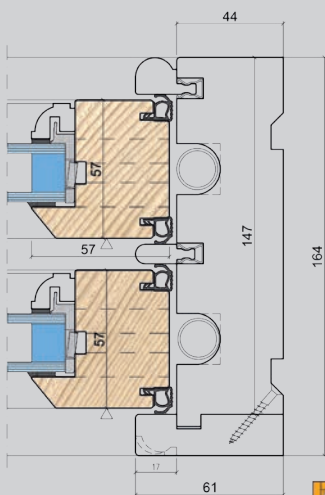
- Box Sash Window
- Spring Balanced Window

# Box Sash Window IV 57(47/61/68)/164(144/172/186)

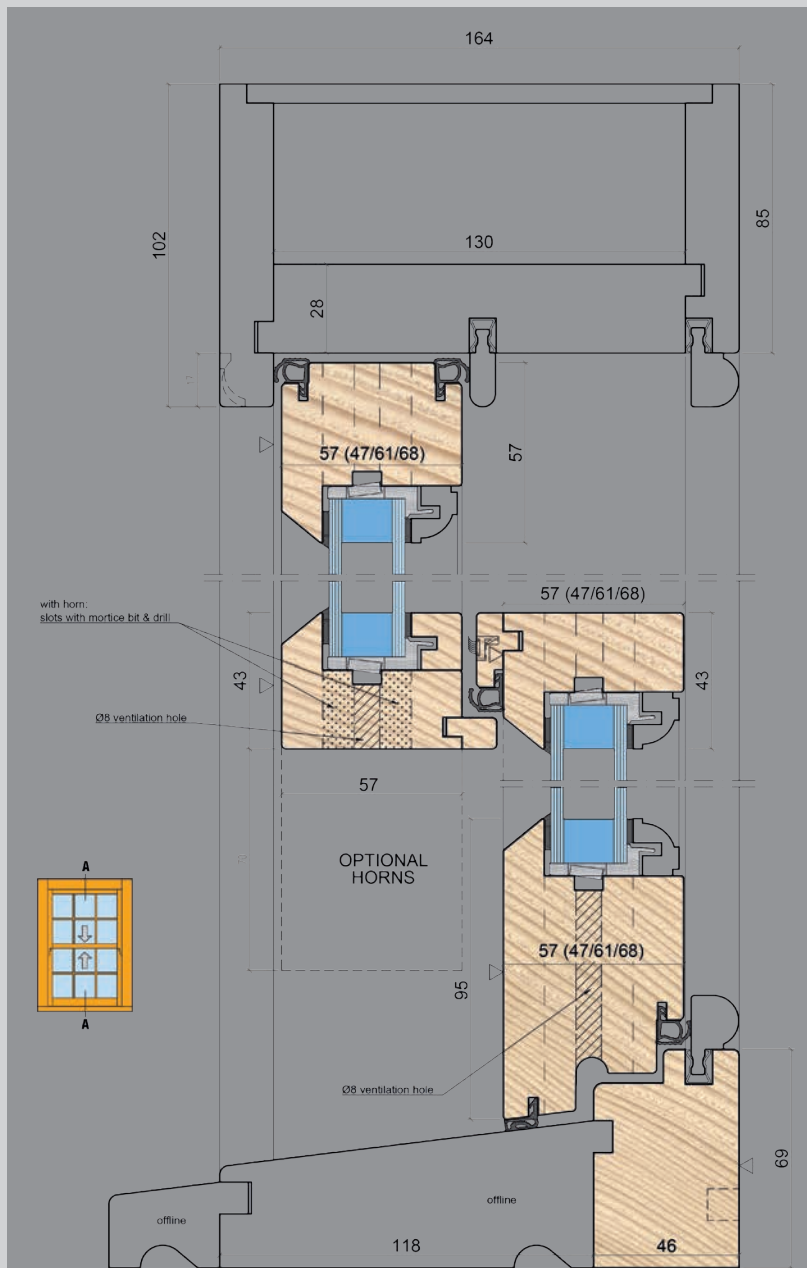
## Window sections



### Spring balanced version



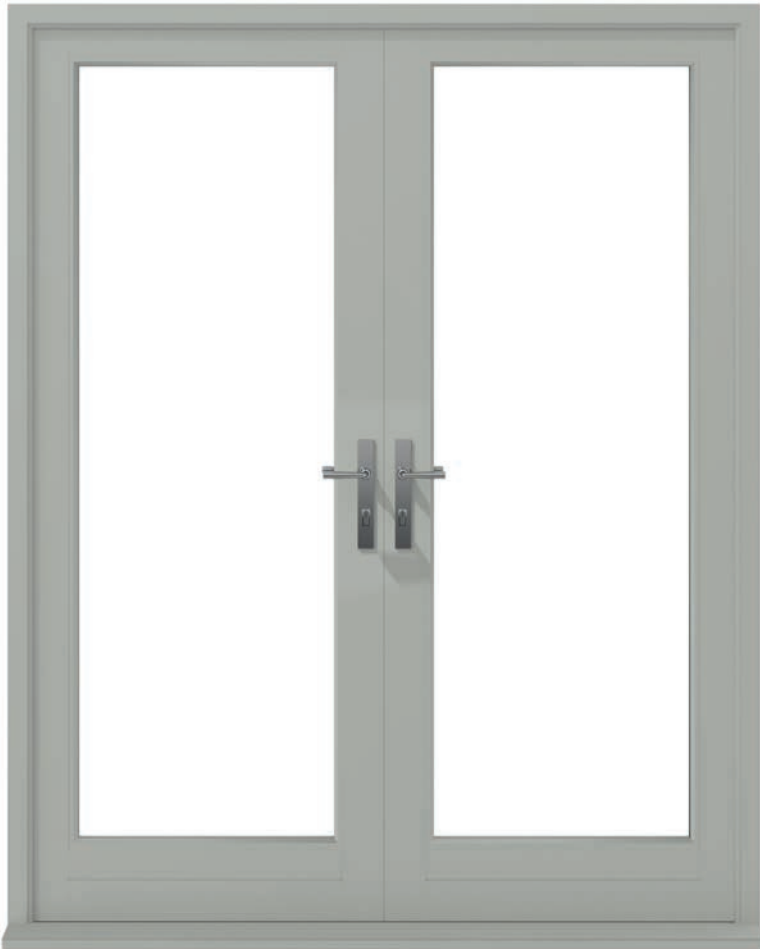
### Optional horn



Sash width [mm]	Glazing type	Glass thickness [mm]
47	double	14
57	double	24
61	triple	28/28.8
68	triple	36/36.8



# Doors



## BENEFITS

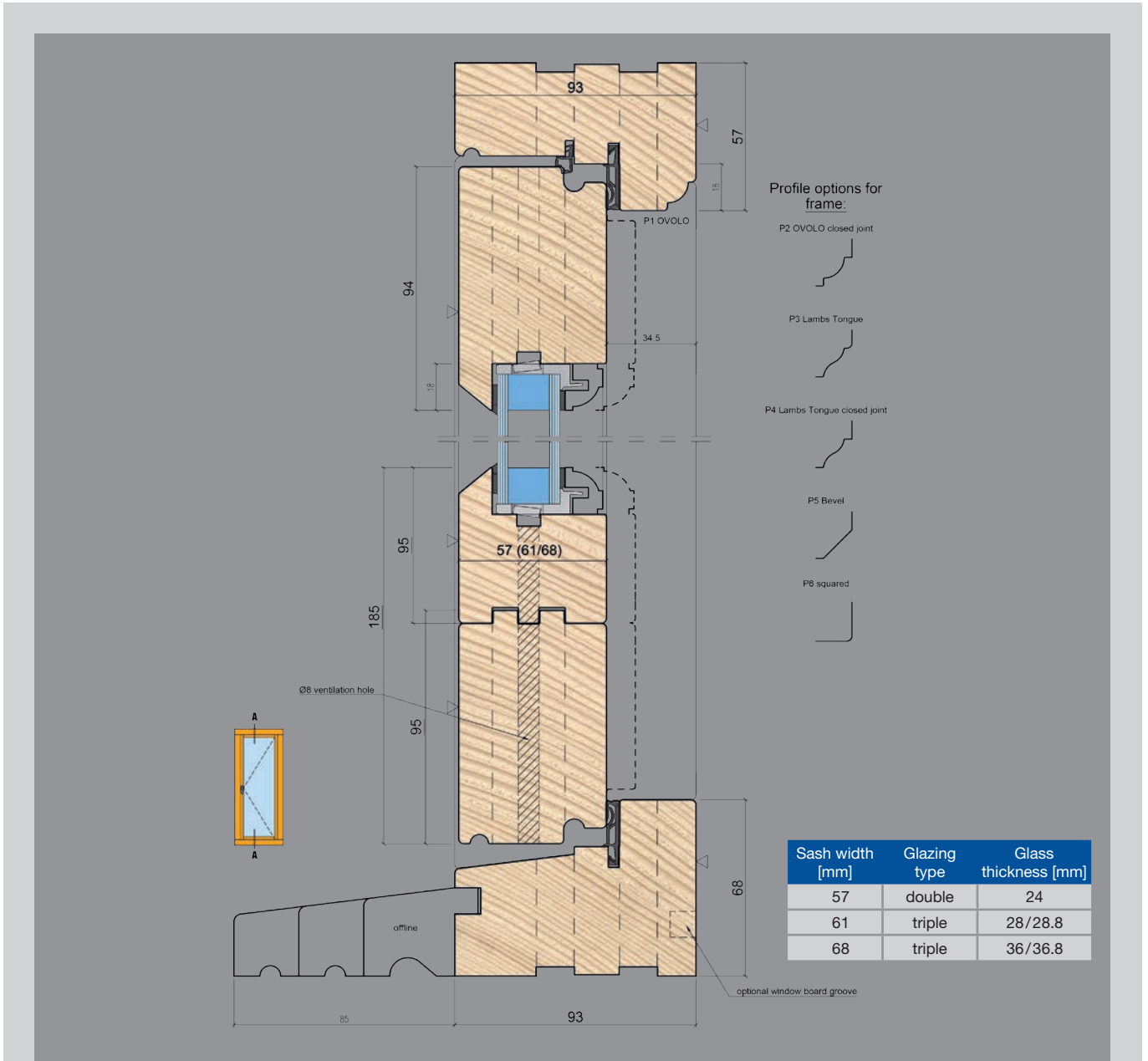
- Designed to provide lots of flexibility for joinery companies to offer a wide range of door styles from traditional to modern.
- PAS24 certified, Document Q and Part M compliant for new build applications.
- High performance insulated panels offer superb energy efficiency and weather performance.
- For double door applications, an optional groove allows for additional weather capping of the meeting stiles.
- Cills are 68 mm or 90 mm as standard, with optional extensions on request.
- Certification available when licenses are purchased from The Joinery Network.

## AT A GLANCE

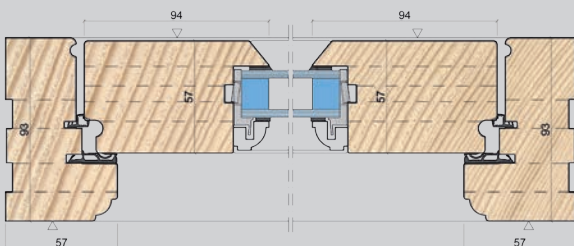
- Single & Double Open In Door
- Single & Double Open Out Door

# Single & Double Open Out Door IV 57 (61/68)/93

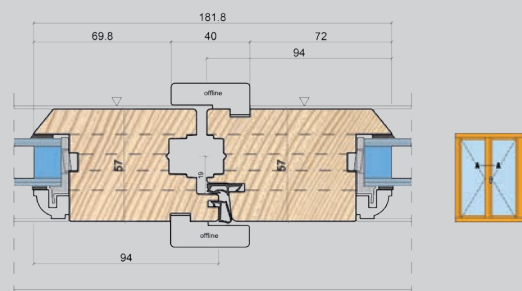
## Door sections



### Jamb details

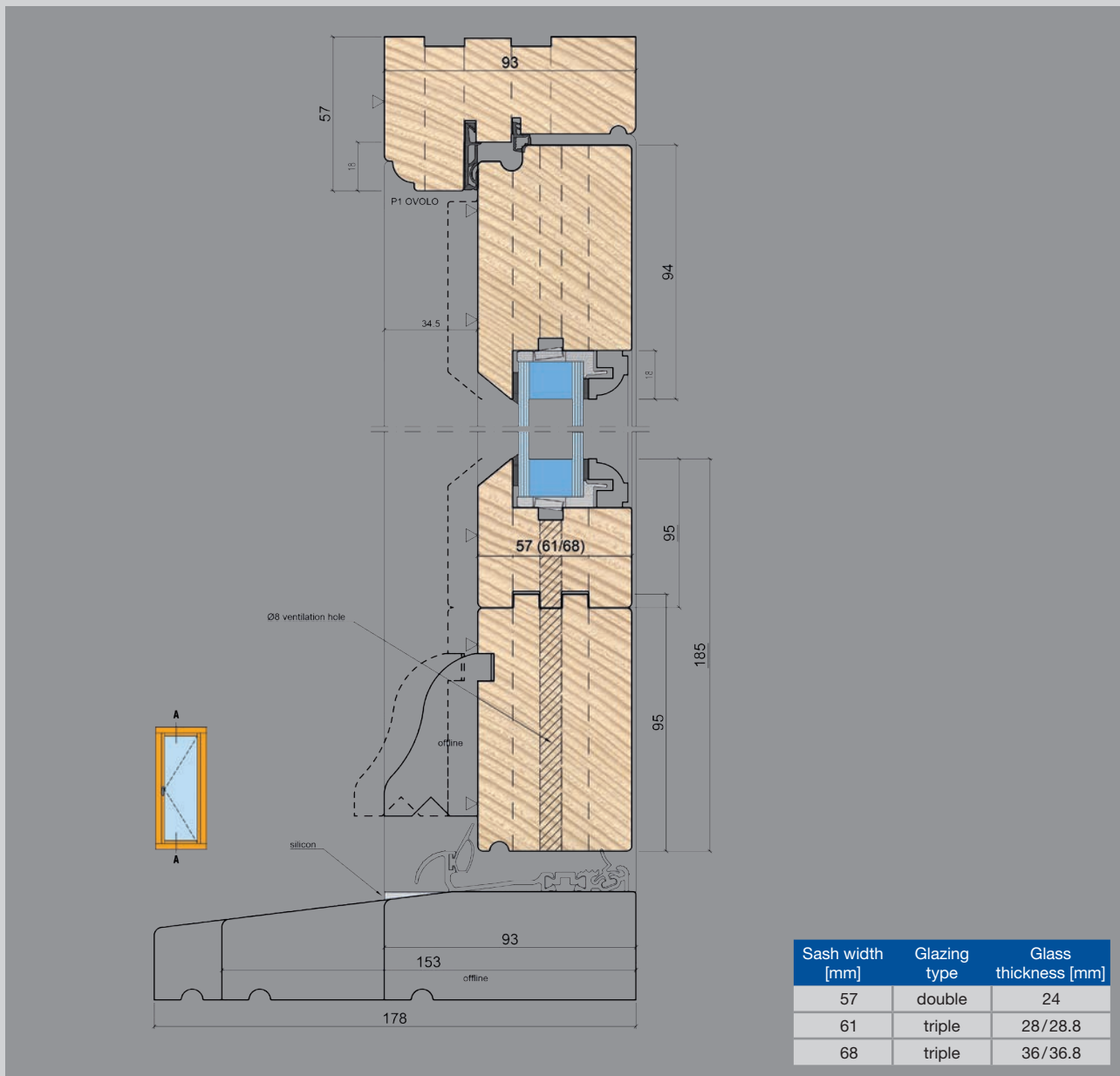


### French door

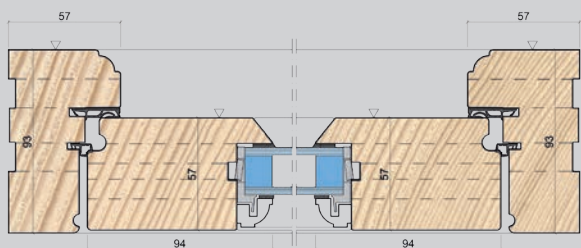


# Single & Double Open In Door IV 57 (61/68)/93

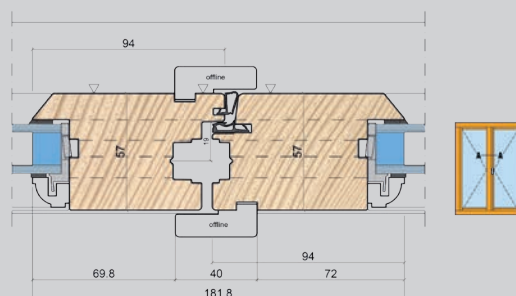
## Door sections



Jamb details



French door





# Gutmann Nordwin Classic

## Aluminium Cladded Lignum Windows

Combining Gutmann's excellence in engineering wood-aluminium glazing with the technical joinery expertise of Leitz, the Gutmann Nordwin Classic cladded Lignum range is a collection of high quality products offering superior performance.

### Nordwin Classic Wood-Aluminium Suite

Developed from the proven Lignum flush window and door system, the Gutmann Nordwin Classic cladded Lignum windows and doors feature a low-maintenance aluminium clad exterior. With a service life of many years, the wood-aluminium combination offers a sustainable solution for both houses and commercial properties. The Gutmann Nordwin Classic range features a flush window and door solution including single and doubles that open in and open out. There is also an option for bi-folding doors opening out.

### Gutmann Is Leitz Toolings' Development Partner

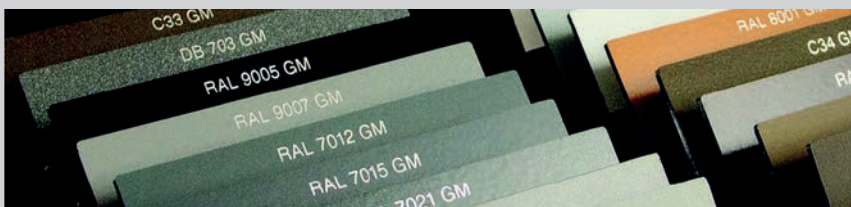
As a global leader with over 80 years of industry expertise, Gutmann specialises in state-of-the-art aluminium systems and aluminium-timber fenestration solutions.

Collaborating closely with architects, planners and house builders; Gutmann brings diverse visions to life through sustainable solutions and efficient recycling practices to guarantee top-quality, eco-friendly products. The Gutmann Nordwin Classic Aluminium cladded range offers benefits such as strong weather resistance, low maintenance and suitability for commercial and municipal buildings.



#### BE BOLD WITH BRONZE

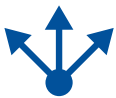
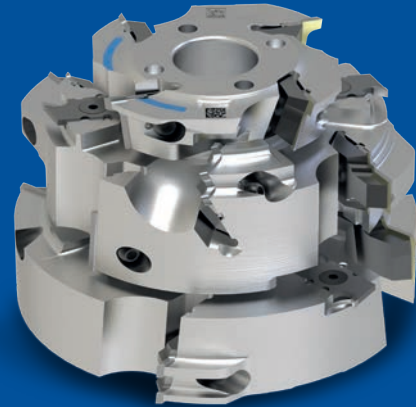
Get inspired with the metals colour collection from the Gutmann Colour Box. The Gutmann Nordwin Classic range is available in any RAL colour and all of the coatings are GSB and QUALICOAT certified.



# ProfilCut Q

For highest precision and cutting quality

A profile tool system proves its superiority when it covers a wide range of applications and at the same time ensures outstanding cut quality with long tool life. The Leitz ProfilCut Q cutterhead system offers these advantages and sets the standard in the industry.



## FLEXIBILITY

**The system with the unbeatable versatility**

- Most types of profile can be implemented
- Use to the majority of conventional machines is possible
- A wide range of materials can be processed
- Different cutting material and knife combinations possible



## QUALITY

**Highest machining quality over the entire life cycle**

- Excellent surface quality through extra-sharp cutting edges and low vibration lightweight construction
- Reduced splintering on the wood due to the profiled chip breaker
- Optimally matching HW grades can be combined with diamond



## PRODUCTIVITY & EFFICIENCY

**More production with easy handling and less maintenance**

- Less machine downtime and longer runs in use due 30 % longer tool life
- Fewer rejects and rework due to surfaces in finish quality
- Quick set-up times through automatic knife positioning without setting devices
- Low maintenance due to dustproof elements
- Optimised costs through the combination of several knife types such as turnblades, profile cutting edges, edge rounders, spurs etc.

### YOUR BENEFITS

- For most profiling tasks
- Excellent cut quality over the entire tool life
- Long tool life
- Minimum set-up times
- Easy handling

### AT A GLANCE

- For cutting speeds ( $v_c$ ) up to 90 m/s
- Tool body mostly manufactured from light metal
- Suitable for all conventional machines
- Applicable in solid wood, wood derived materials and plastics
- TC cutters with Marathon high-performance coating

# The Joinery Network



## Growing your window and door business?

The Joinery Network has everything you need to manufacture high quality windows and doors that meet all British Standards required for Building regulations including Document Q security certification.

We can offer you advice on how to reduce production costs while giving you ways to increase sales to the market.

We also work with major brands for hardware, along with joinery expert consultants, specialist market agencies, Leitz tooling, manufacturing software, asset Finance experts and R & D tax credits.

It is a co-operative of specialist companies bringing together a complete range of services for businesses who manufacture or install timber windows & doors.

You do not join The Joinery Network. It is simply an easier way to find and work with the expert suppliers you need to help your business thrive.

## Contact us

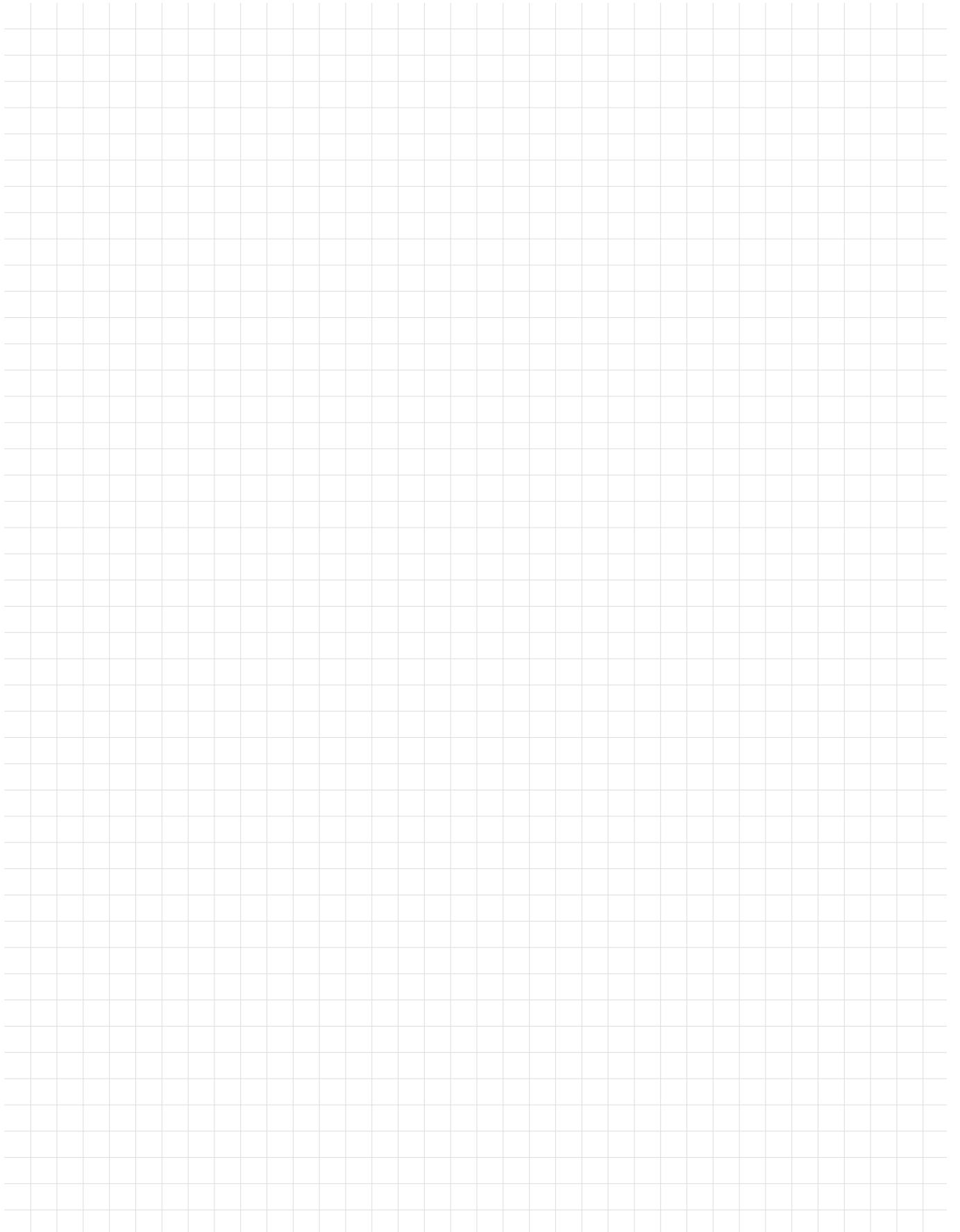
For orders or further details on our Lignum tooling solution, please call or email the Leitz sales team.

Tel. +44 1279 4545 30  
salesUK@leitz.org  
www.leitz.org

To find out more about The Joinery Network and how we can help your business, please call email the team directly.

Tel. +44 3333 4498 95  
hello@thejoinerynetwork.co.uk  
thejoinerynetwork.co.uk

# Notes

A large grid of small squares, intended for writing notes. The grid covers most of the page area below the title.



**Your local contact:**  
Scan QR Code or visit  
[www.leitz.org](http://www.leitz.org).



[www.leitz.org](http://www.leitz.org)

