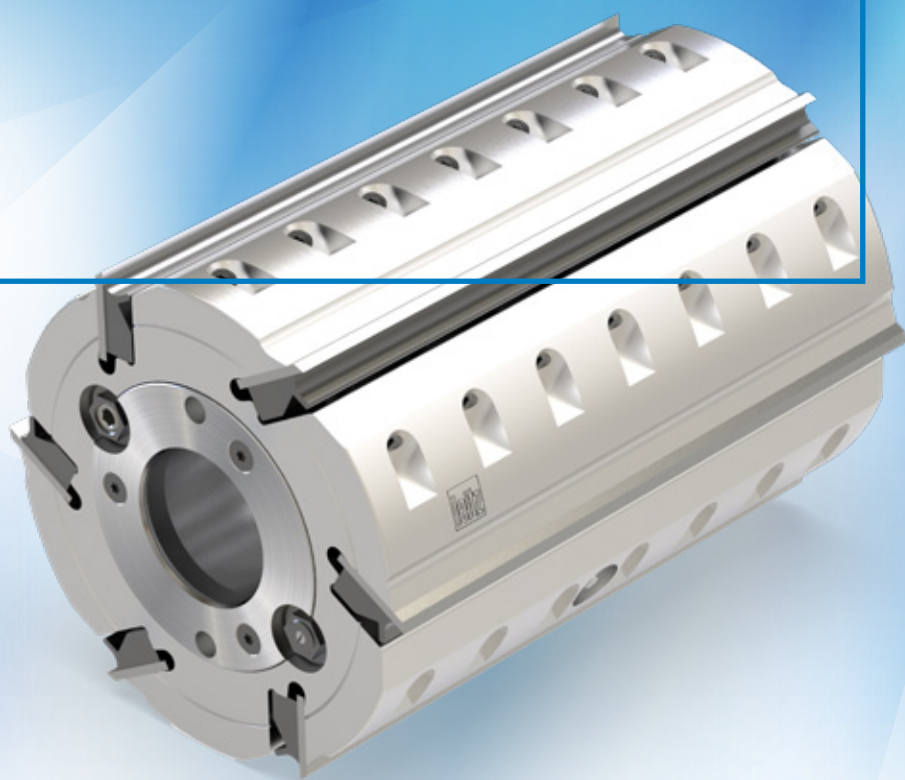


# Planer/profile cutterhead with closed hydro clamping system

The classic planer/profile cutterhead  
in an improved version



More and more customers in the planing mill sector want production processes without open hydraulic clamping systems. As in furniture production, the focus here is on preventing contamination from escaping grease – both on the machines and on the workpieces. At the same time, the demand for simple and safe handling of tools is growing.

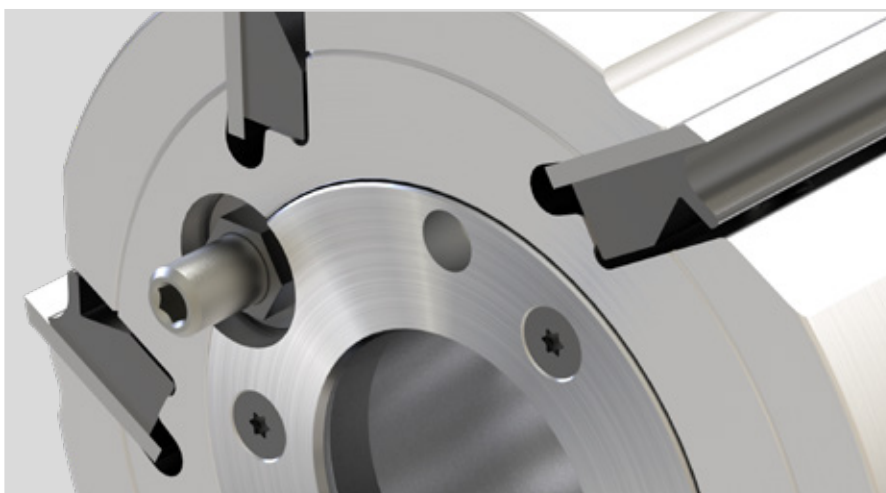
The planer/profile cutterhead with closed hydro clamping system from Leitz impresses with: **process reliability** – for clean and efficient machining, **reliability** – with integrated display for clamping pressure, **sustainability** – thanks to minimised grease consumption. For more cleanliness in production and maximum safety when working.

## YOUR BENEFITS

- High tool safety
- Clean machines and workpieces
- Cost savings
- Easy handling

## AT A GLANCE

- Individual tool design
- For smooth (3 mm) / back-serrated (5 mm) planing knives and back-serrated profiled blanks (8 mm)
- Diameter 135-400 mm
- For four-sided planing and profiling machines
- For softwood and hardwood
- Cutting material MC (standard), optional HS or HW



Axial operating piston for pressure build-up



Up to 6-fold

■ LONGER TOOL LIFE  
■ COMPARED TO UNCOATED  
■ HS PLANER KNIVES

Up to -80 %

■ LESS RESHARPENING  
■ COSTS COMPARED TO  
■ HS PLANER KNIVES

Up to -80 %

■ LESS MACHINE  
■ DOWNTIME

## Your benefits due to ...



### QUALITY

#### No soiling and best planing results

- Clean machines and workpieces thanks to closed clamping system
- No jamming on the spindle due to special surface treatment on the bush
- Consistently optimum machining results due to perfect concentricity
- High work safety due to pressure gauge



### SUSTAINABILITY

#### Long-lasting and environmental friendly

- Ideal cutting material utilisation through the use of blades with Marathon coating
- Up to 6 times longer tool life compared with HS planer knives due to the use of Marathon planer knives
- Durable tool body due to special surface treatment



### EFFICIENCY

#### Easy handling

- User-friendly handling thanks to closed hydro clamping system
- Cost savings due to less grease consumption

Planer/profile  
cutterhead with  
closed hydro  
clamping system:  
clean, safe,  
sustainable!

