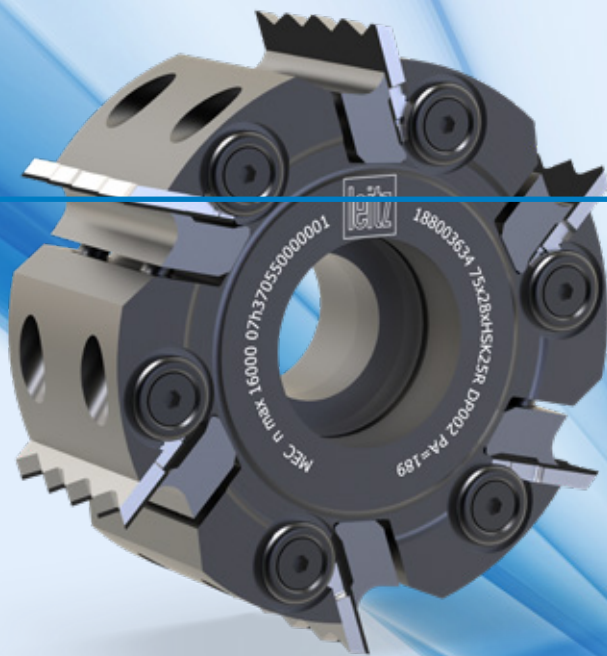




# ProfilCut Q Diamond

Innovative edge finishing in the furniture industry



ProfilCut  Diamond

The use of diamond tools is indispensable in edge finishing – but also could be cost-intensive. Resharpening could reduce costs, but each sharpen causes time-consuming machine adjustments due to changes in tool diameter. The result: no real savings, but unnecessary downtimes.

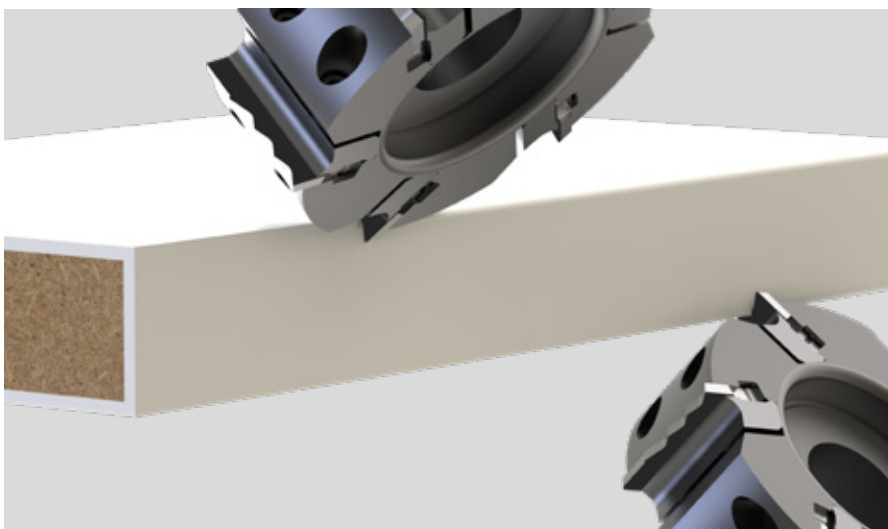
Leitz offers the solution with the ProfilCut Q Diamond constant diameter tool system. It can be resharpened up to five times and is then immediately ready for use again – without any adjustment work on the machine. This reduces the costs per tool life, saves time and therefore significantly improves the cost-effectiveness of the entire process. The reusable tool body also ensures maximum sustainability.

## YOUR BENEFITS

- Low tool life cost thanks to resharpenable exchangeable knives
- No adjustment necessary after resharpening

## AT A GLANCE

- Diamond cutting edges
- 5 times resharpenable
- Reusable tool body
- For edge banding machines with high part output
- Various dimensions and profiles available





## Your benefits due to ...



### EFFICIENCY

**Significantly reduces the costs per tool life**

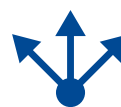
- 40 % lower costs per tool life thanks to resharpenable, constant diameter system
- Plug & play – no adjustment work required after service
- Six tool lives per diamond knife



### SUSTAINABILITY

**A plus for the environment and users**

- Conservation of resources thanks to reusable tool bodies
- Ideal cutting material utilization thanks to multiple reshaping



### FLEXIBILITY

**Individual use of several profile combinations**

- Multi-profile knives for customer-specific radii and chamfers
- Profile variants can be changed at short notice by Leitz Service thanks to the exchangeable knife system

ProfilCut Q  
Diamond:  
Edge finishing  
re-thought.

