

leitz

Variable angle cutterhead

Variable bevel angle in all working materials



Perfect cutting results in different materials

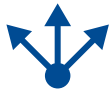
Whether industrial or bespoke production, joining and beveling with different bevel angles represents one of the central challenges with regard to the available equipment, different materials, profiles and quality requirements.

The Leitz variable angle cutterhead system offers individual advantages for every company size and thus helps to achieve a clear production and quality. The system is not only flexible and sustainable, but also improves production efficiency.

YOUR BENEFITS

- Excellent cutting results
- Easy handling
- Applicable in different materials
- Significantly less noise
- Long tool life

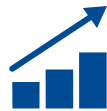
Your benefits due to ...



FLEXIBILITY

Variable angle cutterhead – adjustable in use

- Suitable for various materials from solid wood to wood derived materials and plastics
- Can be used on machines with manual feed, throughfeed machines and CNC machining centres



EFFICIENCY

Variable angle cutterhead – economical in every respect

- Excellent cutting results and long tool life due to optimized cutting materials
- High cutting speed through intelligent tool design
- No reworking required due to extremely sharp cutting edges
- Fast and accurate knife change without setting gauges



SUSTAINABILITY

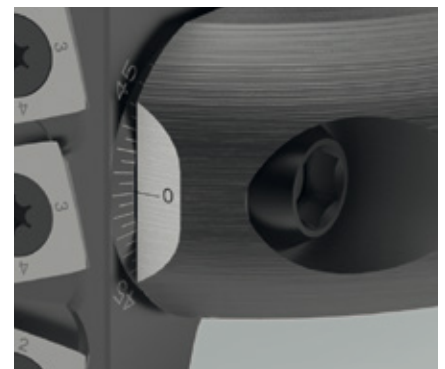
Variable angle cutterhead – a benefit for user and environment

- Long tool life and thus lower tool costs thanks to steel tool body and hardened clamping elements
- Reduced noise through noise-optimized design

Application recommendation

Working material	Design variant		
	Turnblade	HeliCut	WhisperCut
Softwood	●	●	
Hardwood	●	●	○
Gluelam	○	●	○
MDF	○	○	●
Coated chipboard	○	○	●
Thermoplastic working materials		●	
Technical foams (XPS, EPS, PU, ...)		●	
Fibre reinforced plastics (GFK, CFK)			●

● suitable ○ conditionally suitable



Stepless angle adjustment +/-60°
with locking positions in 15° steps



Turnblade knife system

A cutting result in different timbers and wood derived materials that is mark free.

AT A GLANCE

- Standard turnblade WP 12
- Mark free cutting result due to 1-part, continuous cutting edge
- Cutting width of 50 mm = at 45° maximum workpiece thickness 34 mm
- Suitable for CNC machining centres, moulders (MAN) and through feed machines (MEC)
- Applicable in many wood and wood derived materials
- Standard: Available ex stock
Semi-Standard: Available at short notice
- Tungsten carbide turnblades

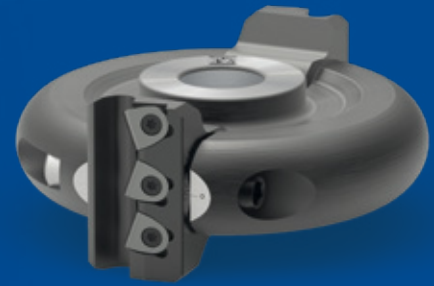


HeliCut knife system

Particularly smooth cutting in solid wood and “soft” working material.

AT A GLANCE

- 4 times turnable knives
- Workpiece edges tear-free on both sides due to alternating shear angles
- Partial change of cutting edges in case of local wear or damage
- “Aggressive” cutting edge geometry
- Cutting edge 55 mm = at 45° maximum workpiece thickness 38 mm
- Suitable for CNC machining centres, moulders (MAN) and through feed machines (MEC)
- Applicable in solid wood and “soft” working materials such as softwood, foams, etc.
- Standard: Available ex stock
Semi-Standard: Available at short notice
- Tungsten carbide turnblades



WhisperCut knife system

Especially for machining abrasive materials.

AT A GLANCE

- Cutting edges can be changed by the operator
- Workpiece edges tear-free on both sides due to alternating shear angles
- Partial change of cutting edges in case of local wear or damage
- “Robust” cutting edge geometry
- Cutting width of 55 mm = at 45° maximum workpiece thickness 38 mm
- Suitable for CNC machining centres, moulders (MAN) and through feed machines (MEC)
- Applicable in abrasive working materials such as MDF, fibre-reinforced plastics (FVK), etc.
- Standard: Available ex stock
Semi-Standard: Available at short notice
- Diamond cutting edges

Ordering information for the products shown above can be found in the Leitz Lexicon at www.leitz.org



UP TO 40 %

TIME SAVING
THROUGH NEWLY
DESIGNED ADJUSTMENT
MECHANISM

UP TO 50-fold

LIFETIME OF
WHISPERCUT VERSION
IN COMPARISON
TO TUNGSTEN
CARBIDE KNIVES

100 %

FLEXIBILITY REFERRING
THE WORKPIECE
MATERIALS

Variable angle
cutterhead:
Unrivalled easy,
flexible and safe!



www.leitz.org

